



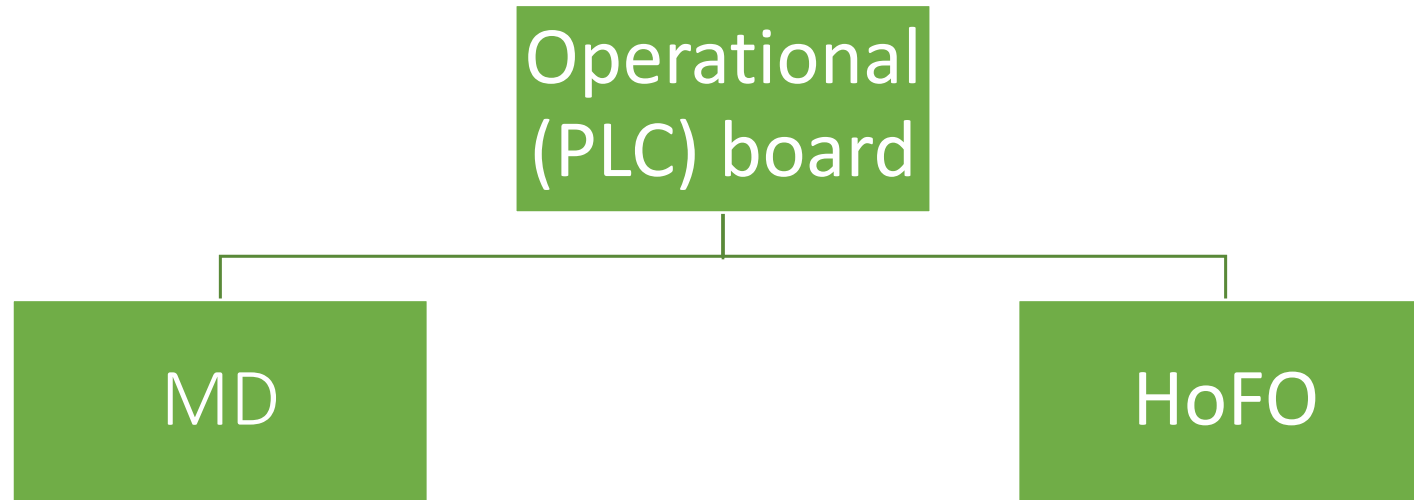
What's needed, in principle?

- Senior professional leadership within the club which is capable and accountable, and is trusted internally and externally
 - all leaders are committed to the culture, mission and strategic direction as set by the elected board
- An operational board to which that leadership reports and by which that leadership is held accountable
 - sets strategic implementation
 - has the right mix of skills and experience to support and challenge club leadership
 - all directors are committed to the culture, mission and strategic direction as set by the elected board
- An elected board which sets culture and mission and strategic direction, in consultation with members, and appoints and oversees the operational board



Senior professional leadership

- New hires in 2022/2023 season





Operational board: AFCW plc

- Between 9 and 12 board members
- 3 from DTb Oversight group who carry a blocking vote (only when needed)
- Operational board Chair manages MD & HoFO
- MD/HoFO etc to attend as required
- External experts recruited for specific skills and/or business experience (e.g. wider football knowledge, finance, commercial legal knowledge, property, HR)





Elected board: The Dons Trust

- Sets culture, mission and strategic direction in consultation with members
- Appoints directors
- Approves annual budgets
- Approves significant investment decisions
- Operates the Trust
- Meets regularly as agreed
- Communicates with members





Elected board: Theme Groups

- Each group has at least three DTb members
- Some DTb members will be in more than one group
- The “Oversight” group has all the DTb’s PLC board reps in it
- Each group has TOR and membership criteria formally approved by the DTb
- Significant proposals & recommendations come to the full DTb for approval.

Culture & mission

- Who, how & why we are, what we want
- Continually renewed with members and reinforced

Member services & engagement

- Membership engagement, meetings and comms

Oversight

- PLC board membership
- Appointing PLC directors
- Signing off budgets & major investment decisions

Community

- Liaising with other groups and organisations and local community
- Eg Foundation, DLAG, WISH, AFC Wimbledon Women, FSA, Fair Game